



karin weber gallery
Contemporary Fine Art

G/F, 20 Aberdeen Street, Central, Hong Kong
852.2544 5004 | art@karinwebergallery.com | www.karinwebergallery.com

**Press Release
For Immediate Release**

Karin Weber Gallery presents

GEOFF TODD

POLE

**Exhibition: 17th February – 11th March, 2012
Opening: Thursday 16th February 6:30 – 8:30 pm**

At a time when the world seems to accept “Anything can be Art”, *Pole* is a collection of drawings by **Geoff Todd** of pole dancers that may remind us that once Art becomes anything, conversely, *Art has simply become something else*. So rather than lose Art completely, the artist has attempted honestly & spontaneously to bring a sense of movement, variation in line, tone, form and evidence of the vulnerability of the artist’s hand in this series of sketches, qualities often lost in modern techniques. Some will see this work as anachronistic, but since Art is not fashion, I hope all will see it as Art.

‘In essence, Todd is a maverick, communicating his message without concern for fashion or political correctness. He commemorates the valor of war heroes, yet is a pacifist. He recoils from publicity and sensationalism, yet paints with his own blood in outrage at the violence of war. He argues his art is not about content, but form, yet his work is frequently inspired by text and conveys important social commentary’, said Dr. Jacqueline Healy.

About the artist

Geoff Todd, from Melbourne, has lived among the Aboriginal communities of Australia’s Northern Territory, to Bali and Java, Vienna and Italy. In Australia, he is represented in the public collections of the National Gallery of Australia in Canberra, the National Gallery of Victoria and the Museum and Art Gallery of the Northern Territory as well as many regional institutions.

About the gallery

The gallery was founded in 1995 by German-born Karin Weber, who worked for more than 15 years in the antiques and art business in London. The gallery curates and introduces the work of emerging and established Asian and Western artists. ‘It is very important to us to maintain our reputation as an energetic, outgoing and accessible art gallery, to continue to inspire, interest and provide enjoyment and cultural enrichment to our collectors and the general public alike,’ says Karin.

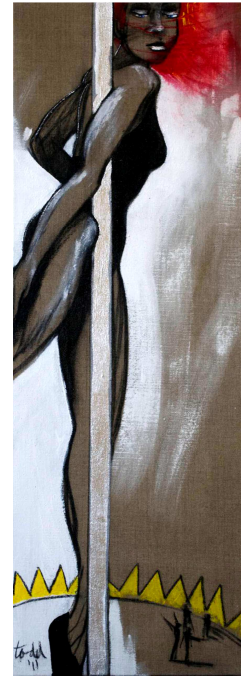
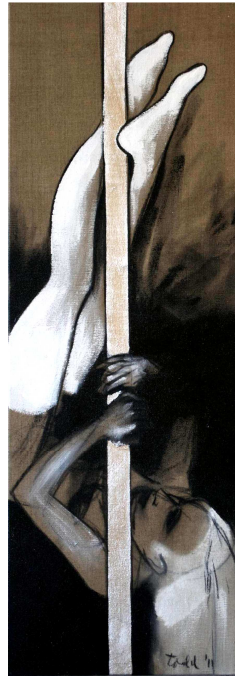
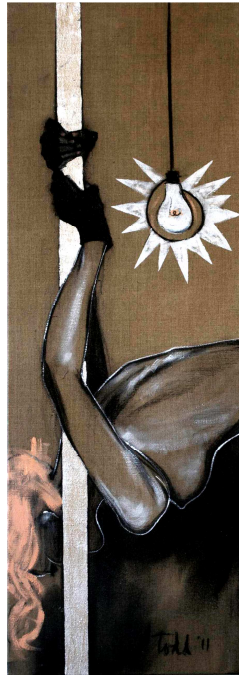
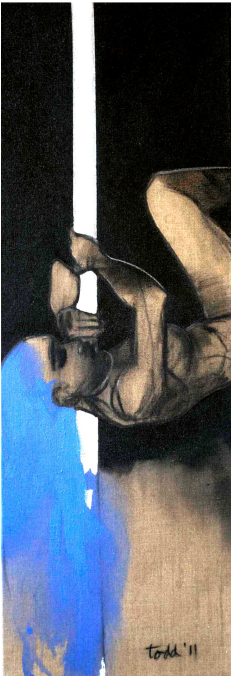
For any enquiries, please contact Kenneth Young at (852) 2544 5004 or art@karinwebergallery.com



karin weber gallery
Contemporary Fine Art

G/F, 20 Aberdeen Street, Central, Hong Kong
852.2544 5004 | art@karinwebergallery.com | www.karinwebergallery.com

Images of artwork



Title: Blue Hair / Light / Upside Down / Red Hair (left to right)
Artist: Geoff Todd
Medium: acrylic, charcoal and metal leaf on linen
Size: 101cm x 35cm each
Year: 2011

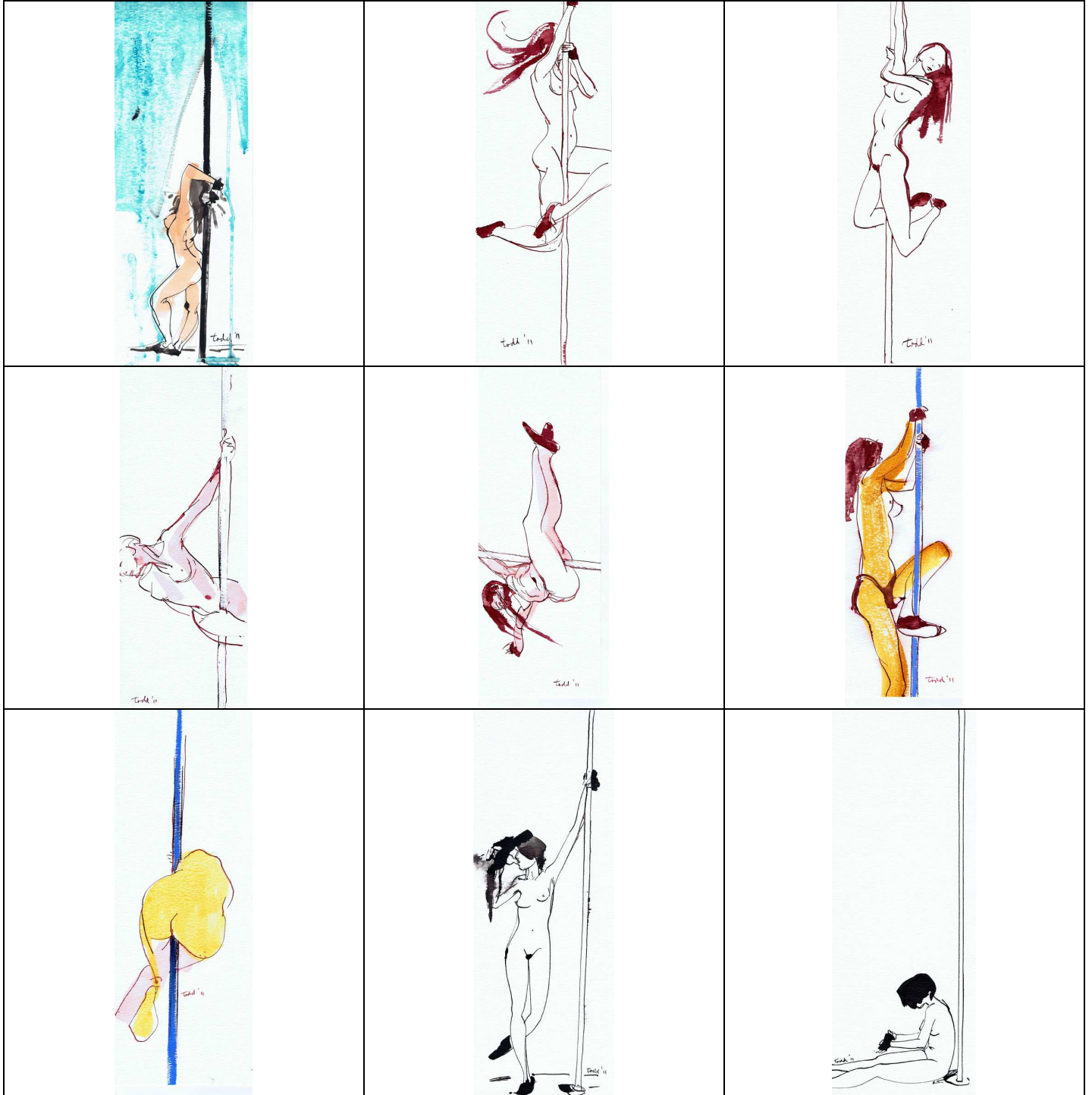
Photo of the artist Geoff Todd





karin weber gallery
Contemporary Fine Art

G/F, 20 Aberdeen Street, Central, Hong Kong
852.2544 5004 | art@karinwebergallery.com | www.karinwebergallery.com



9 drawings, Geoff Todd, ink on paper, 40cm x 15cm each, 2011.